



FEDERATION OF PROTESTANT WELFARE AGENCIES

POLICY MATTERS

Analysis of Projected General Preventive Slots

The Federation of Protestant Welfare Agencies (FPWA) is concerned about the potential loss in the number of General Preventive Programs in New York City. General Preventive (GP) programs are designed to ensure that children remain safe in the home and to prevent children from entering foster care.

Based on the Projected Community District (CD) Level Slot Allocations for General Preventive Programs that will be implemented through a new RFP in July 2010, there is a substantial decrease in the number of General Preventive (GP) slots throughout New York City with Manhattan, Brooklyn, the Bronx, and Queens all projected to face considerable reductions. As illustrated in **Figure 1**, more than one-third of GP slots are lost citywide (34.7%). Manhattan faces the sharpest reductions, as half (50.0%) of its GP slots are projected to be cut. Brooklyn is slated to lose slightly more than one-third (36.7%) of its GP slots. In addition, Queens (30.1%) and the Bronx (26.5%) are projected to lose a sizeable percentage of their GP slots as well. Staten Island projects to lose less than one percent (-0.6%) of its GP slots. Figure 2 illustrates the actual number of projected slots lost by borough and citywide. More than four thousand (4,044) GP slots are projected to be eliminated citywide. Brooklyn is slated to lose the most slots at 1,503, followed by Manhattan at 1,187. The Bronx is projected to lose 757 slots, Queens 595 slots, with Staten Island projected to lose just two slots. The loss of this many slots is considerable and could jeopardize the gains made in the utilization of preventive programs. Moreover, these projections are based on service providers having an average 12 month length of service. Thus, the number of slots could be reduced further if programs serve families who may require more than 12 months of services, and thus that slot is not available.

When examining the decline in GP slots at the Community District (CD) level – seen fully in **Table 1** – twenty-one CDs are projected to experience substantial declines (considered as a decline of more than one-third of slots, which is around the citywide decline of 34.7%).

The following CDs are projected to have substantial declines in GP slots:

- Bronx: **BX01** (Mott Haven, Melrose); **BX02** (Mott Haven/Melrose);
- Brooklyn: **BK01** (Greenpoint/Williamsburg); **BK02** (Fort Greene/Brooklyn Heights); **BK04** (Bushwick); **BK06** (Park Slope/Carroll Gardens); **BK08** (Crown Heights); **BK09** (South Crown Heights/Prospect Heights); **BK13** (Coney Island); **BK14** (Flatbush/Midwood)
- Queens: **QN01** (Astoria); **QN02** (Woodside/Sunnyside); **QN06** (Rego Park Forrest Hills); **QN07** (Flushing/Whitestone); **QN10** (South Ozone Park/Howard Beach); **QN11** (Bayside/Little Neck); **QN12** (Jamaica Hollis)
- Manhattan: **MN03** (Lower East Side/Chinatown); **MN09** (Morningside Heights/Hamilton Heights); **MN10** (Central Harlem); **MN11** (East Harlem); **MN12** (Washington Heights/Inwood)

FPWA is concerned that the loss of GP slots will greatly hamper the child welfare system's ability to protect children and to help stabilize families. In our work with the Preventative Services Action Network (PSAN), a letter was sent to Administration for Children's Services Commissioner Mattingly to express our concern that the loss of GP slots could potentially damage the strides and improvements that have been implemented to the preventive component of child welfare. The role of preventive services is paramount for a robust child welfare system, and FPWA is committed to advocating for preventive programs.

Figure 1: Percentage Change in General Preventive Slots by Borough

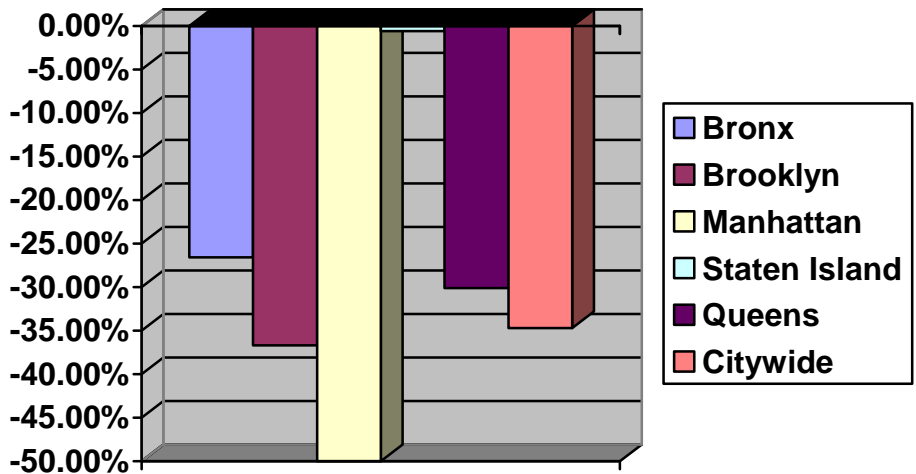


Figure 2: Change in Number of General Preventive Slots by Borough

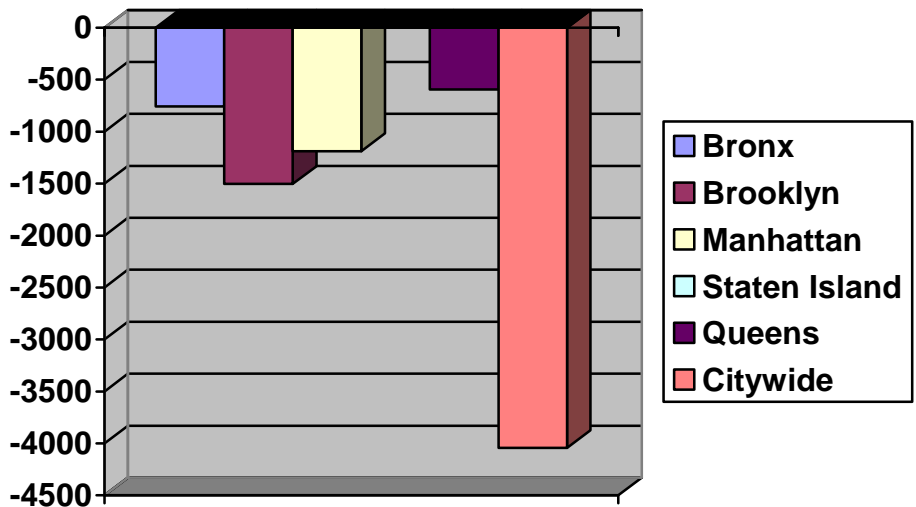


Table 1: Percentage Change in General Preventive Slots by Community District

Community District	Community	Current Slots	Projected Allocations	Percentage Change
Bronx				
BX01	Mott Haven/ Melrose	315	204	-35.2%
BX02	Hunts Point/ Longwood	210	108	-48.6%
BX03	Morrisania/ Concourse	255	192	-1.5%
BX04	Highbridge/ Concourse	375	240	-24.7%
BX05	Fordham/ University Heights	315	240	-23.8%
BX06	Belmont/ East Tremont	300	216	-28.0%
BX07	Kingsbridge Heights/ Bedford	275	192	-30.2%
BX08	Riverdale/ Fieldstone	50	48	-4.0%
BX09	Parkchester/ Soundview	345	264	-23.5%
BX10	Throgs Neck/ Co-Op City	75	72	-4.0%
BX11	Morris Park/ Bronxdale	90	108	20.0%
BX12	Williamsbridge/ Baychester	240	204	-15.0%
Brooklyn				
BK01	Greenpoint/ Williamsburg	240	96	-60.0%
BK02	Fort Greene/ Brooklyn Heights	170	60	-64.7%
BK03	Bedford Stuyvesant	490	336	-31.4%
BK04	Bushwick	305	156	-48.9%
BK05	East New York/ Starrett City	460	336	-26.7%
BK06	Park Slope/ Carroll Gardens	350	120	-65.7%
BK07	Sunset Park	276	204	-26.1%
BK08	Crown Heights	243	144	-40.7%
BK09	South Crown Heights/ Prospect Heights	207	84	-59.4%
BK10	Bay Ridge/ Dyker Heights	66	48	-27.3%
BK11	Bensonhurst	81	60	-25.9%

BK12	Borough Park	71	72	1.4%
BK13	Coney Island	240	108	-55.0%
BK14	Flatbush/Midwood	235	156	-33.6%
BK15	Sheepshead Bay	71	60	-15.7%
BK16	Brownsville	265	228	-13.9%
BK17	East Flatbush	205	180	-12.2%
BK18	Flatlands/Canarsie	120	144	20.0%
Queens				
QN01	Astoria	196	96	-51.0%
QN02	Woodside/Sunnyside	77	48	-37.7%
QN03	Jackson Heights	114	120	5.3%
QN04	Elmhurst/Corona	122	120	-1.6%
QN05	Ridgewood/Maspeth	110	72	-34.5%
QN06	Rego Park/ Forrest Hills	38	12	-68.4%
QN07	Flushing/Whitestone	105	72	-31.4%
QN08	Hillcrest/ Fresh Meadows	67	48	-28.4%
QN09	Ozone Park/ Woodhaven	118	120	1.7%
QN10	South Ozone Park/ Howard Beach	120	72	-40.0%
QN11	Bayside/Little Neck	25	12	-52.0%
QN12	Jamaica/Hollis	573	276	-51.8%
QN13	Queens Village	115	144	25.2%
QN14	Rockaway/ Broad Channel	195	168	-13.8%
Manhattan				
MN01	Financial District	5	12	140%
MN02	Greenwich Village/ Soho	0	12	NA
MN03	Lower East Side/ Chinatown	360	156	-56.7%
MN04	Clinton/Chelsea	45	36	-20.0%
MN05	Midtown	5	24	380.0%
MN06	Stuyvesant Town/ Turtle Bay	10	12	20.0%
MN07	Upper West Side	130	108	-16.9%
MN08	Upper East Side	32	36	12.5%
MN09	Morningside Heights/ Hamilton Heights	355	120	-66.2%
MN10	Central Harlem	521	228	-56.2%
MN11	East Harlem	582	264	-54.6%
MN12	Washington Heights/ Inwood	330	180	-45.5%
Staten Island				
SI01	Saint George/ Stapleton	290	240	-17.2%

SI02	South Beach/ Willowbrook	35	60	71.4%
SI03	Tottenville/ Great Kills	25	48	92.0%